



Weymouth Terrace, London, E2

BUTLER & STAG



Forming part of the popular St Mary's Estate and within walking distance of Haggerston Park is this one-bedroom apartment. Located within an easy walk of both Shoreditch and the City you are home to a community of one-off markets plus a mix of independent local stores, restaurants and bars to discover.



## Leasehold

- Second Floor Apartment
- Purpose Built Low Rise Development
- Separate Toilet
- Chain Free
- Double Bedroom
- Open Plan Living
- Hoxton Station Close By
- Iconic Columbia Road Flower Market Close By

Fellows Court is a moments' walk away to Hoxton Station which is ideal for swift access to Canary Wharf or Liverpool Street. Brick Lane, Columbia Road, Spitalfields and Shoreditch have some of East London's best restaurants, shops and bars, making this an ideal location from which to enjoy all the local amenities.

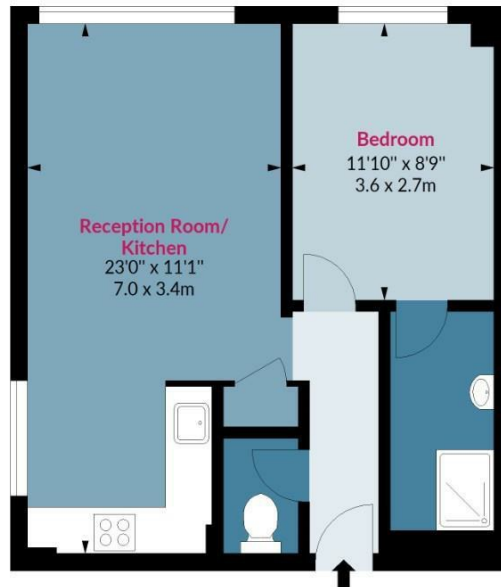




## Fellows Court, E2 8IQ

Approx. Gross Internal Area 460 Sq Ft - 42.73 Sq M

BUTLER & STAG



### Second Floor

Floor Area 460 Sq Ft - 42.73 Sq M



Measured according to RICS IPMS2. Floor plan is for illustrative purposes only and is not to scale. Every attempt has been made to ensure the accuracy of the floor plan shown, however all measurements, fixtures, fittings and data shown are an approximate interpretation for illustrative purposes only. 1 sq m = 10.76 sq feet.

lpaplus.com

BUTLER & STAG

020 8102 1236

508 Roman Road, Bow, London, E3 5LU

bow@butlerandstag.com

www.butlerandstag.uk

IMPORTANT NOTICE - These particulars have been prepared in good faith and they are not intended to constitute part of an offer or contract. We have not performed a structural survey on this property and the services, appliances and specific fittings have not been tested. All photographs, measurements, floor plans and distances referred to are given as a guide and should not be relied upon.